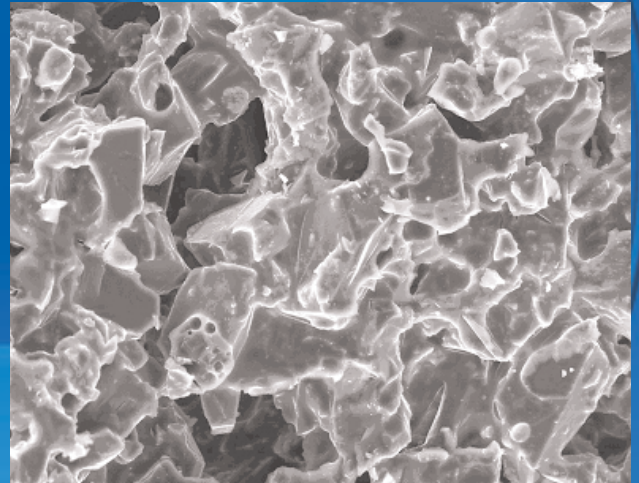


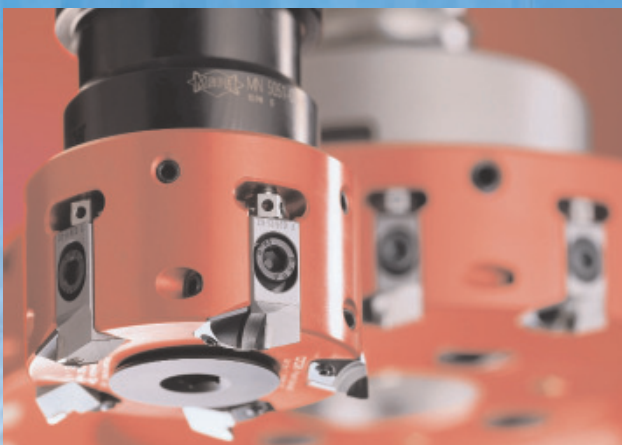
# PCD/PCBN Grinding Wheels in vitrified bond

The innovative solution leading to high quality and productivity by:

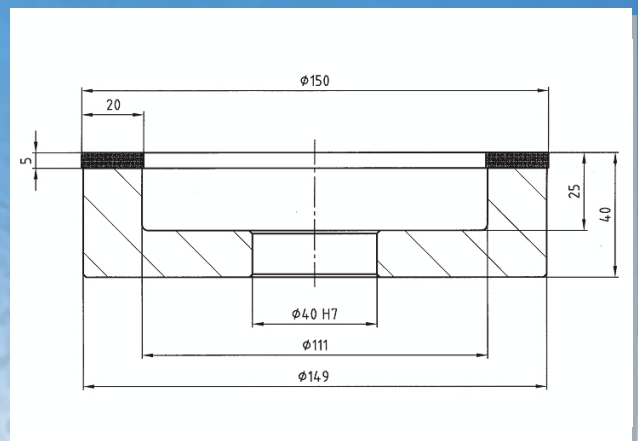
- use of a wear resistant diamond crystal with excellent cutting abilities in an optimized manufacturing process
- a chemically fine tuned grit/bond interface for strong grit retention to inhibit premature grain pull-out



This combination results in superior wheel life, short cycle times and improved chipping characteristics.



Workpiece Examples



Typical PCD Vit Diamond Wheel



abrasives  
**Meister Abrasives**  
Make A Quality Decision  
International

# Case Study:

## PCD grinding with SWISS MASTER VIT DIAMOND



**Workpiece:**

PCD Insert 2x6 mm, 0.6mm of stock to be removed

**Material:**

db010

**Grinding Operation:**

relief angle and chamfer

**Grinding Wheel:**

SWISS MASTER VIT DIAMOND  
11A2 250x70x50 X=8; W=5  
D6-1000-R-10-260-X150-V87-44

**Machine:**

Ewamatic

**peripheral speed:**

18 m/s

**Result:**

**wheel wear:**

**chipping:**

**Meister**

**5 µm/pce**

**below 6 µm**

**Competitor**

8 - 12 µm/pce

8 µm

More information on our website:  
[www.meister-abrasives.com](http://www.meister-abrasives.com)



**Meister Abrasives**  
International  
Make A Quality Decision

abrasives